

SOLAR communicator's installation and operator's manual

1. SOLAR communicator's installation

1.1 Put the inverter's attached CD into the CD-ROM of computer, double click the disk

1.2 Double click the software of "SOLAR communicator" in the disk G, Click the button of "Next>" in the flick dialog box(see Fig. 1).

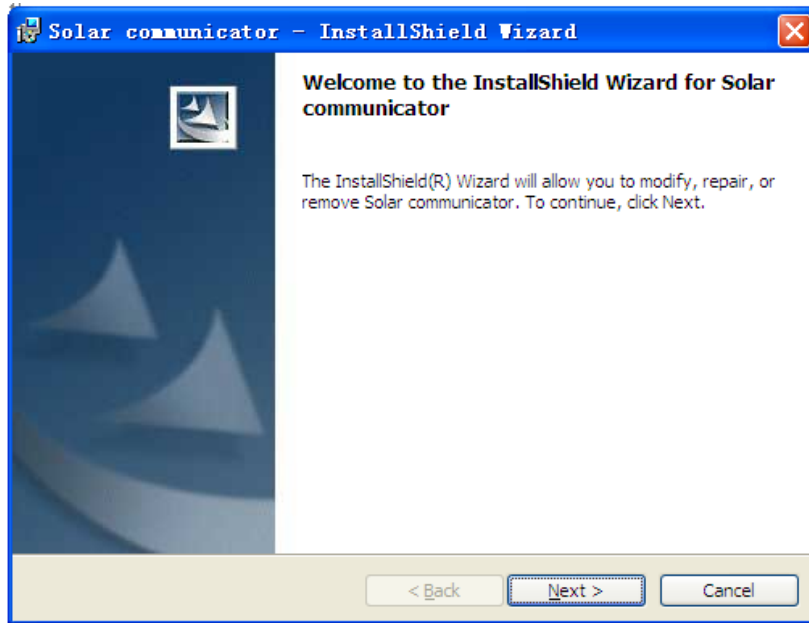


Fig. 1

1.3 Click the button of "Change..." in the flick dialog box. then click the button of "OK" After amend the saving path, click the button of "Next>"(see Fig. 2).

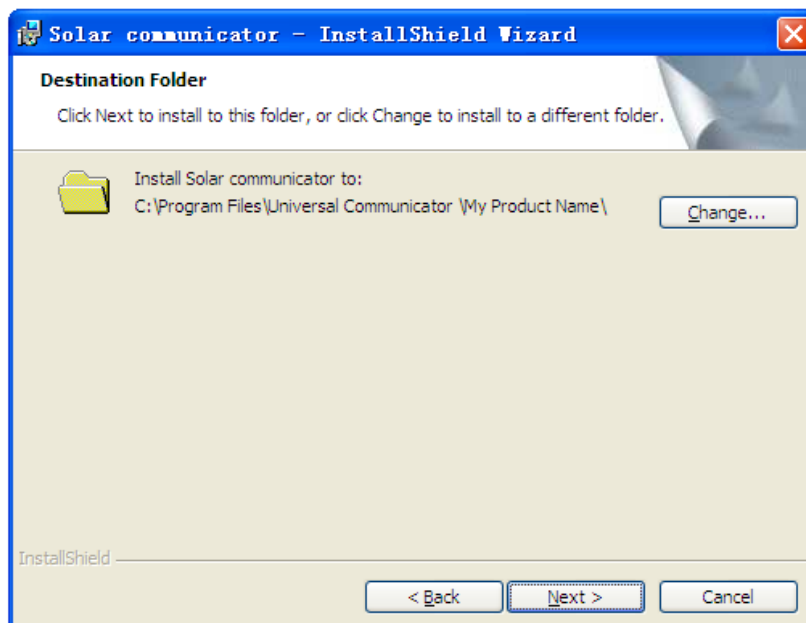


Fig.2

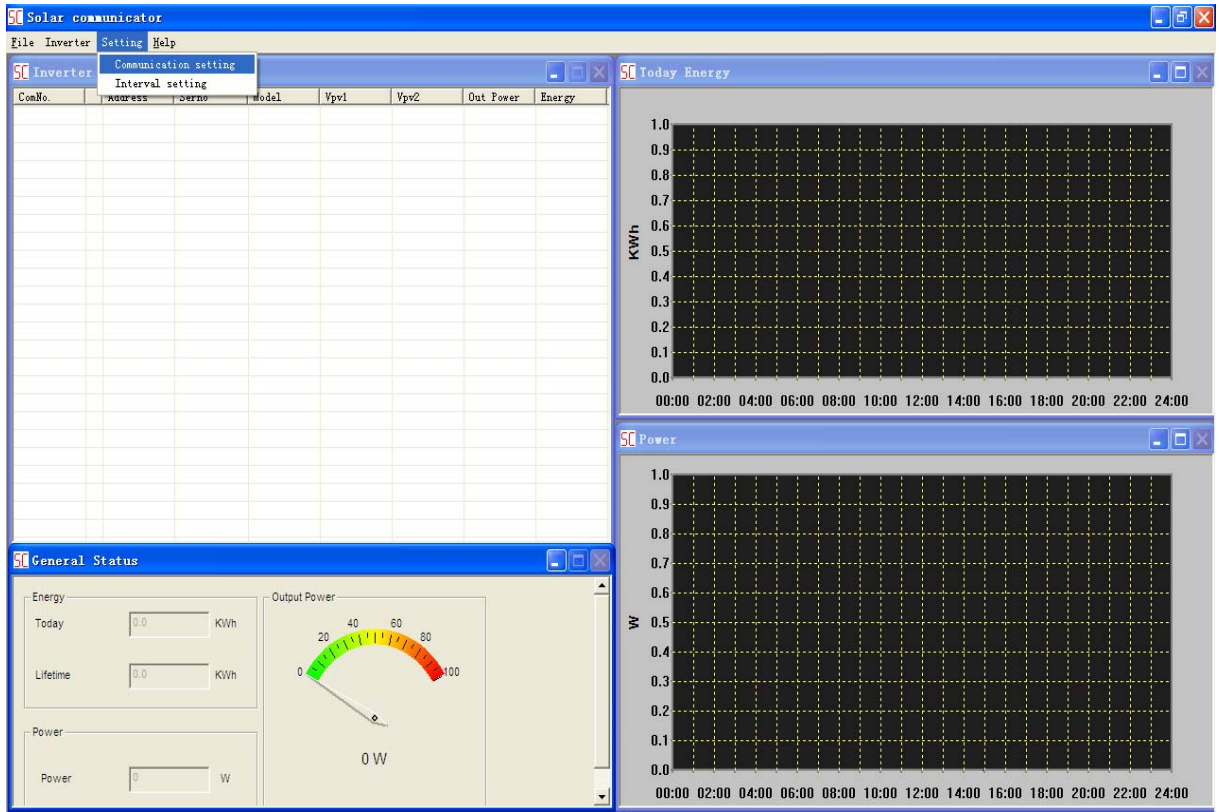


Fig.5

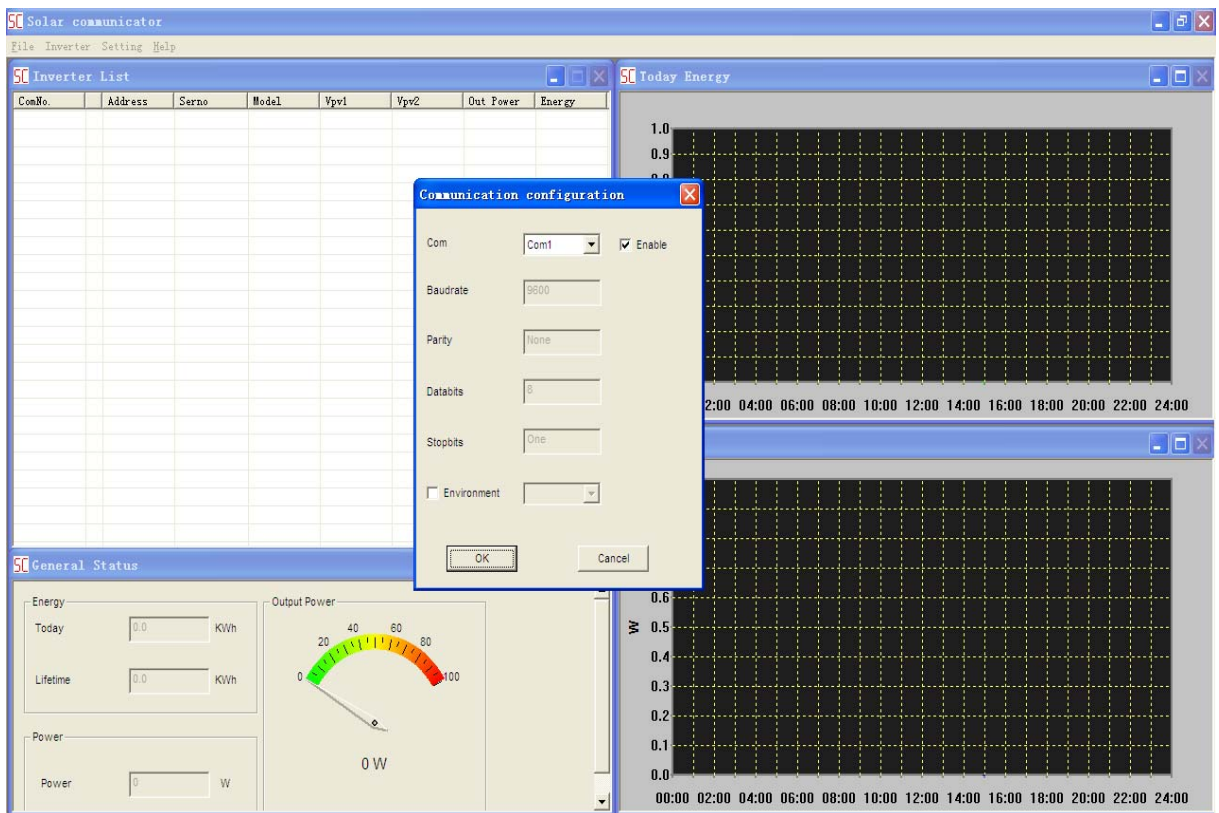


Fig. 6

Thank you for using the software of SOLAR communicator.